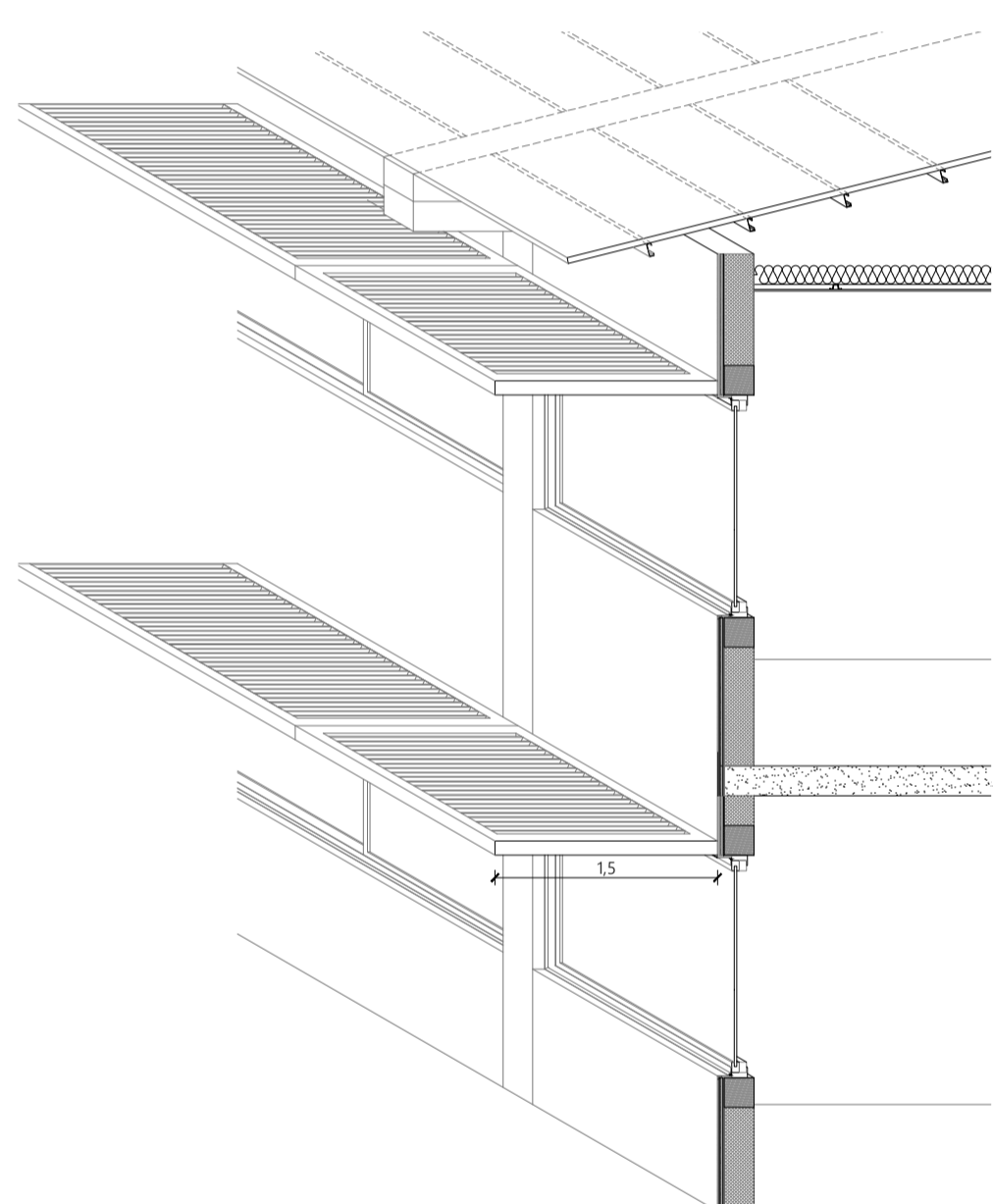
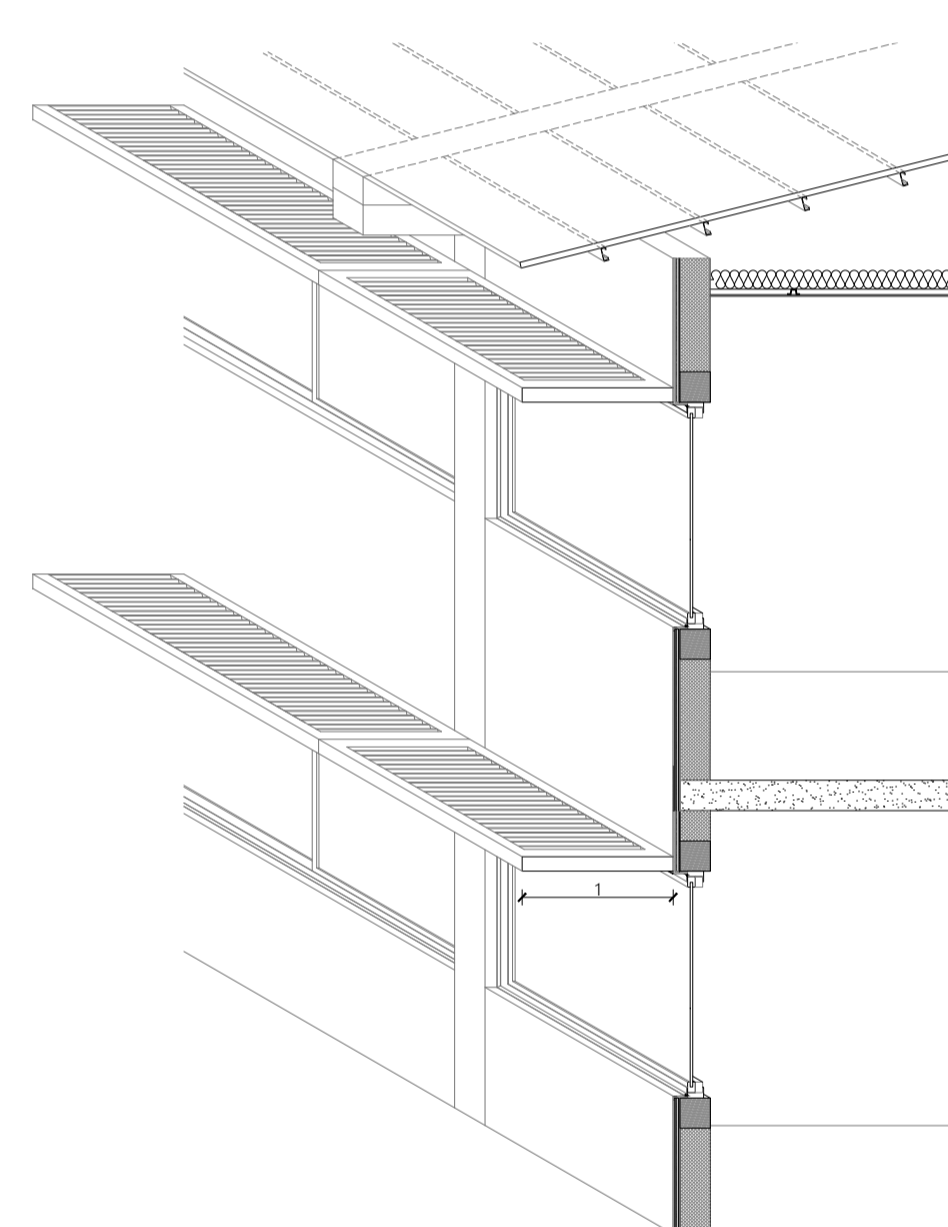


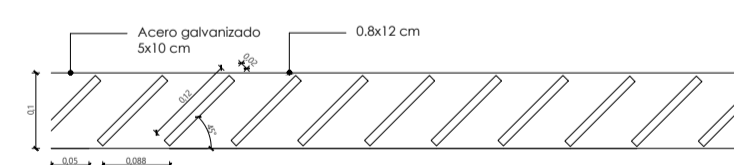
Corte Constructivo
1:50



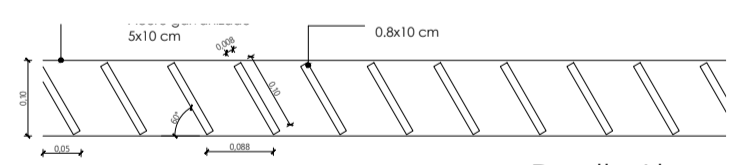
Axonometría Aleros
Edificio 3
Fachada Surponiente
1:50



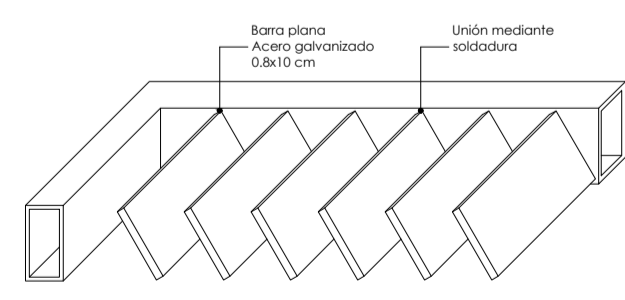
Axonometría Aleros
Edificio 2
Fachada Surorientada
1:50



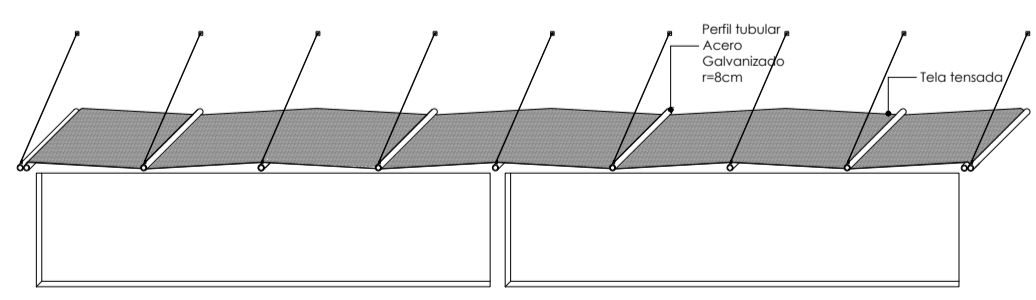
Detalle Aleros
Edificio 3
Fachada Surponiente
1:10



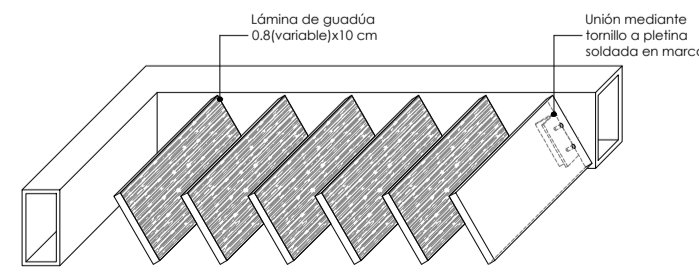
Detalle Aleros
Edificio 2
Fachada Surorientada
1:10



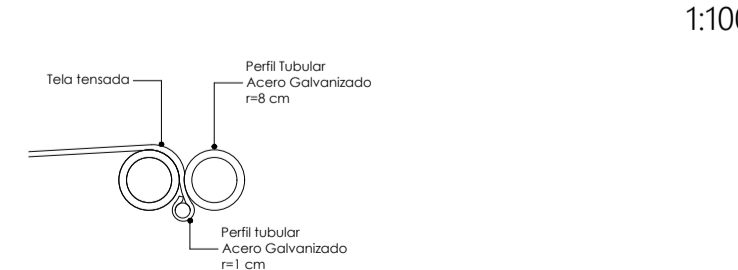
Diseño Alero Acero
1:10



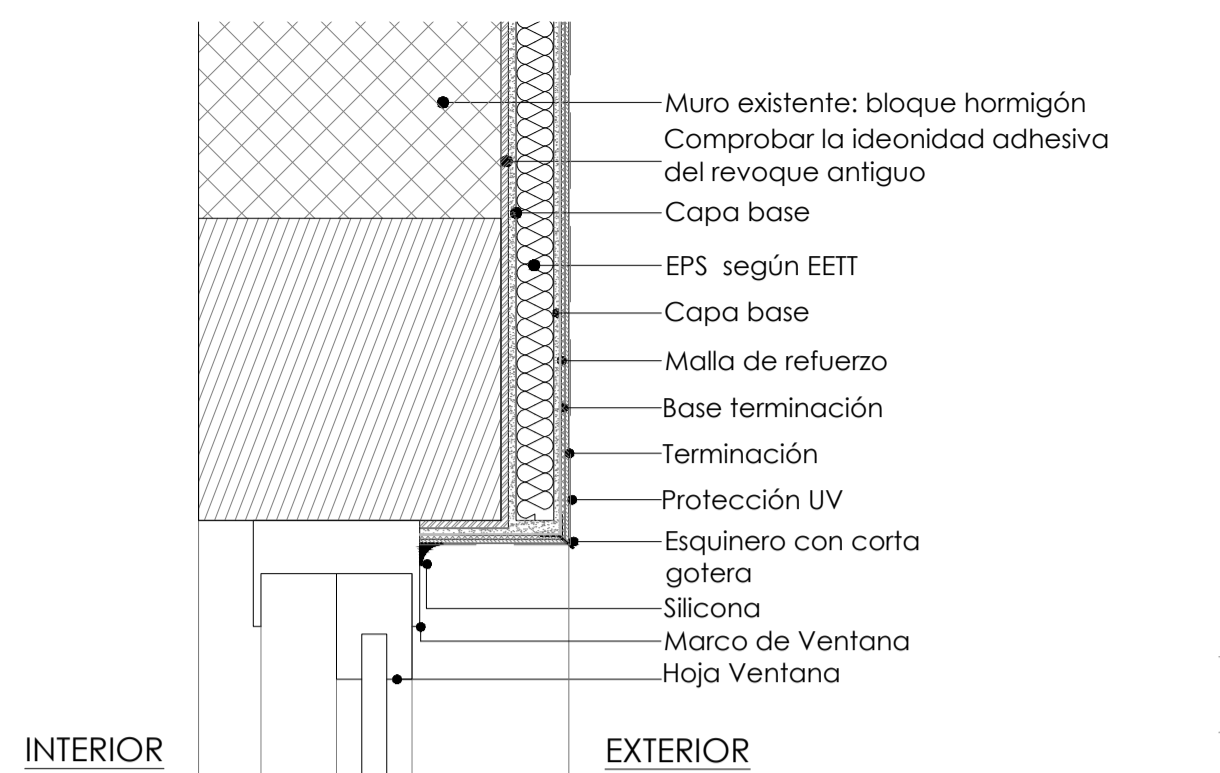
Diseño Alero Tela
1:100



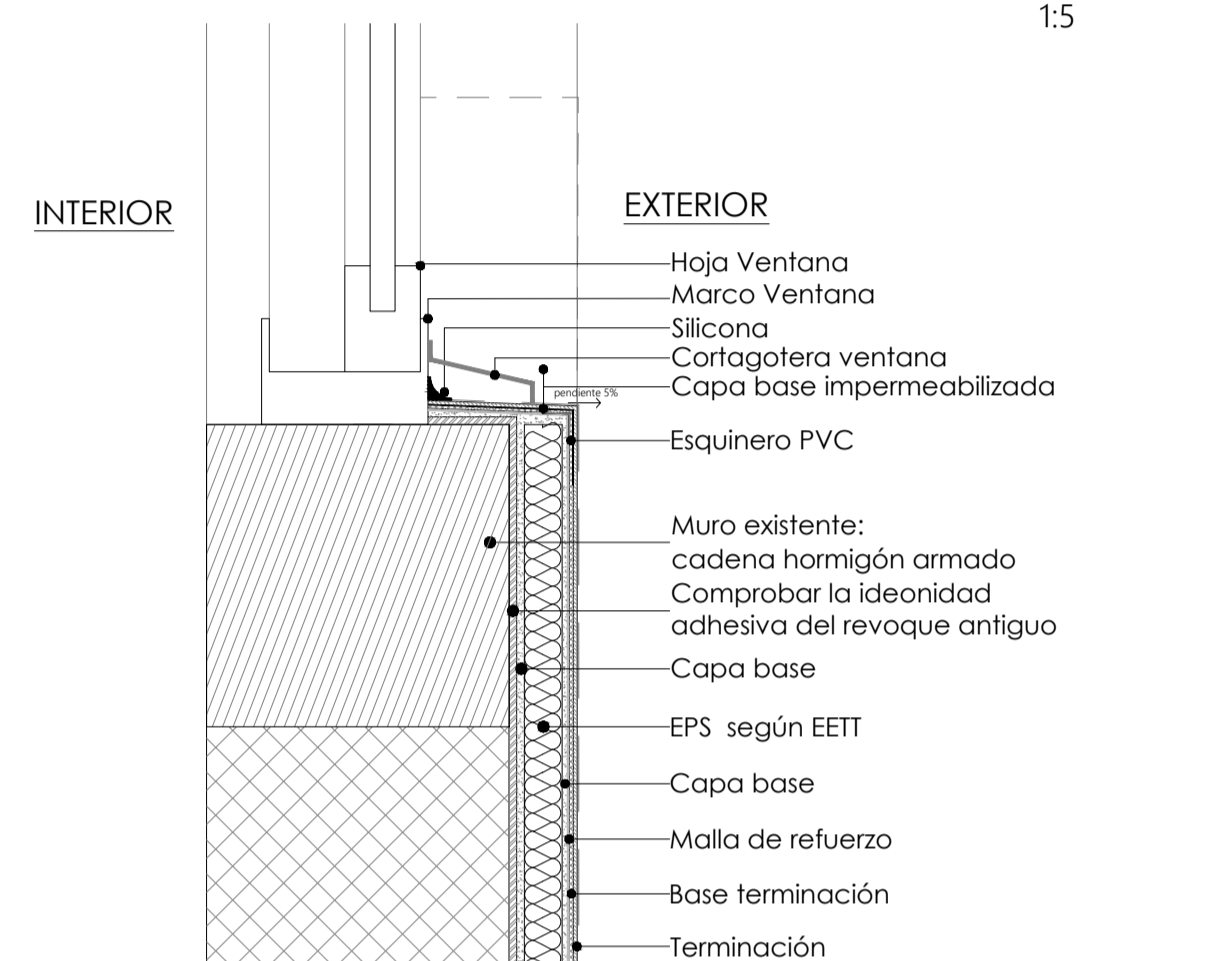
Diseño Alero Guadúa
1:10



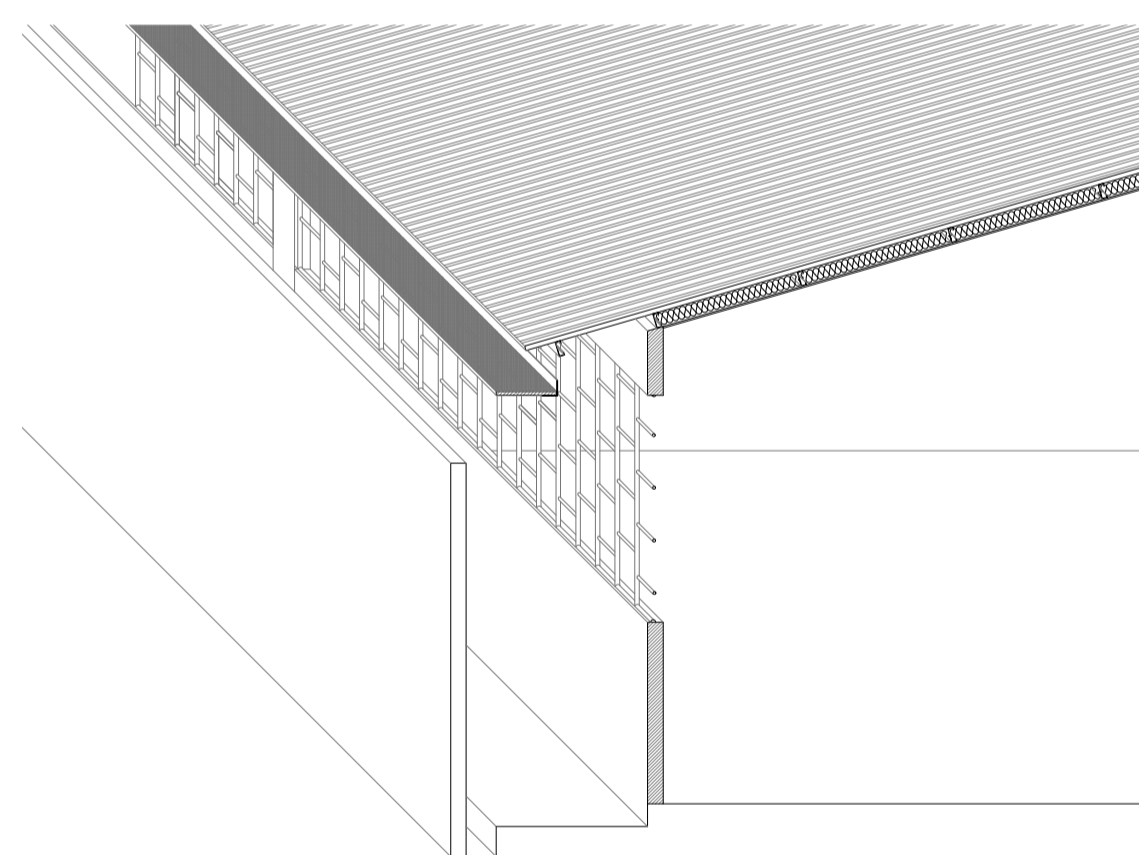
Detalle tensado tela
1:10



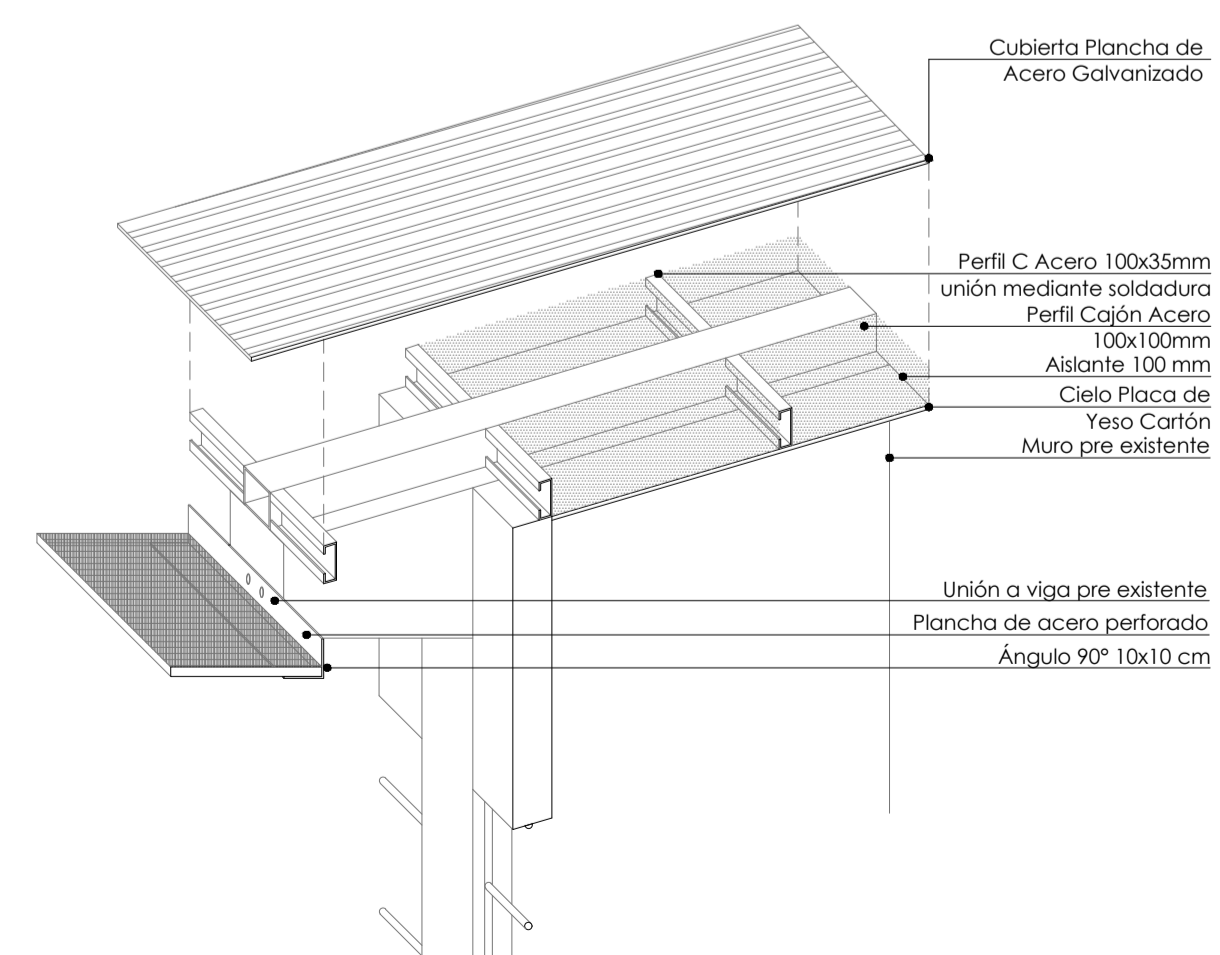
Detalle Dintel Ventana
1:5



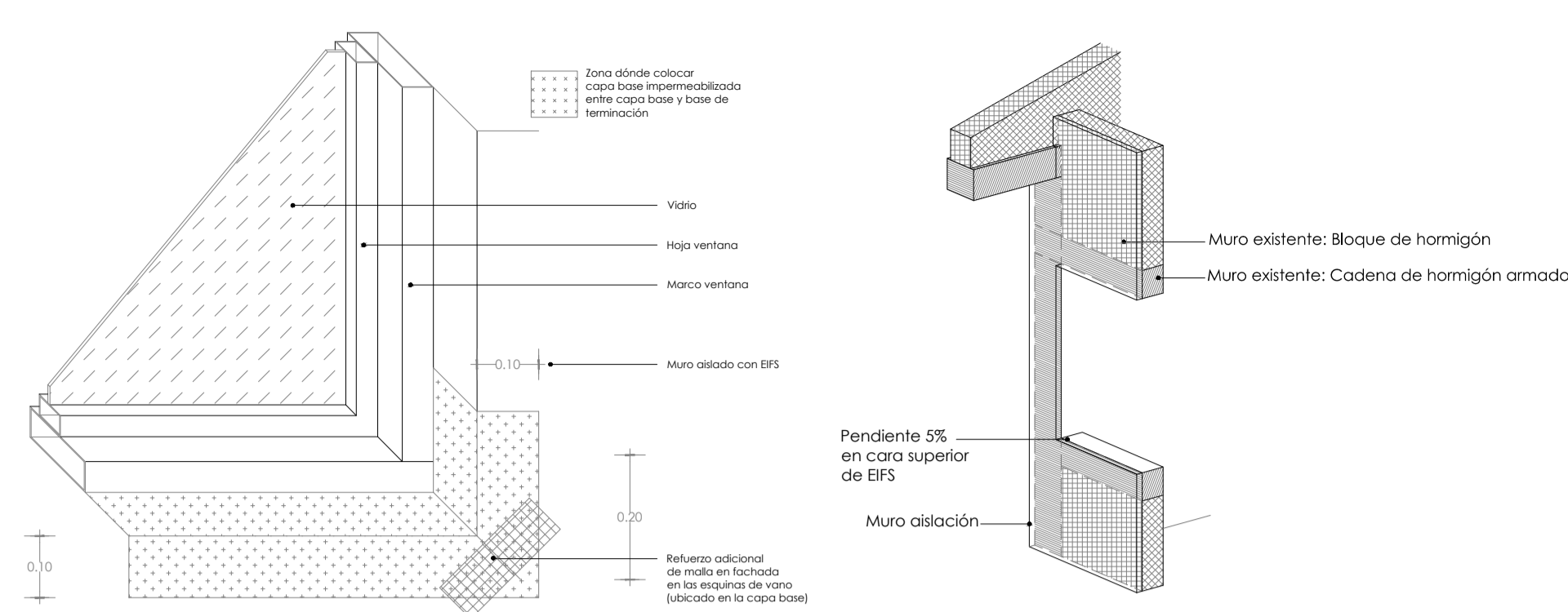
Detalle Alfeizar Ventana
1:5



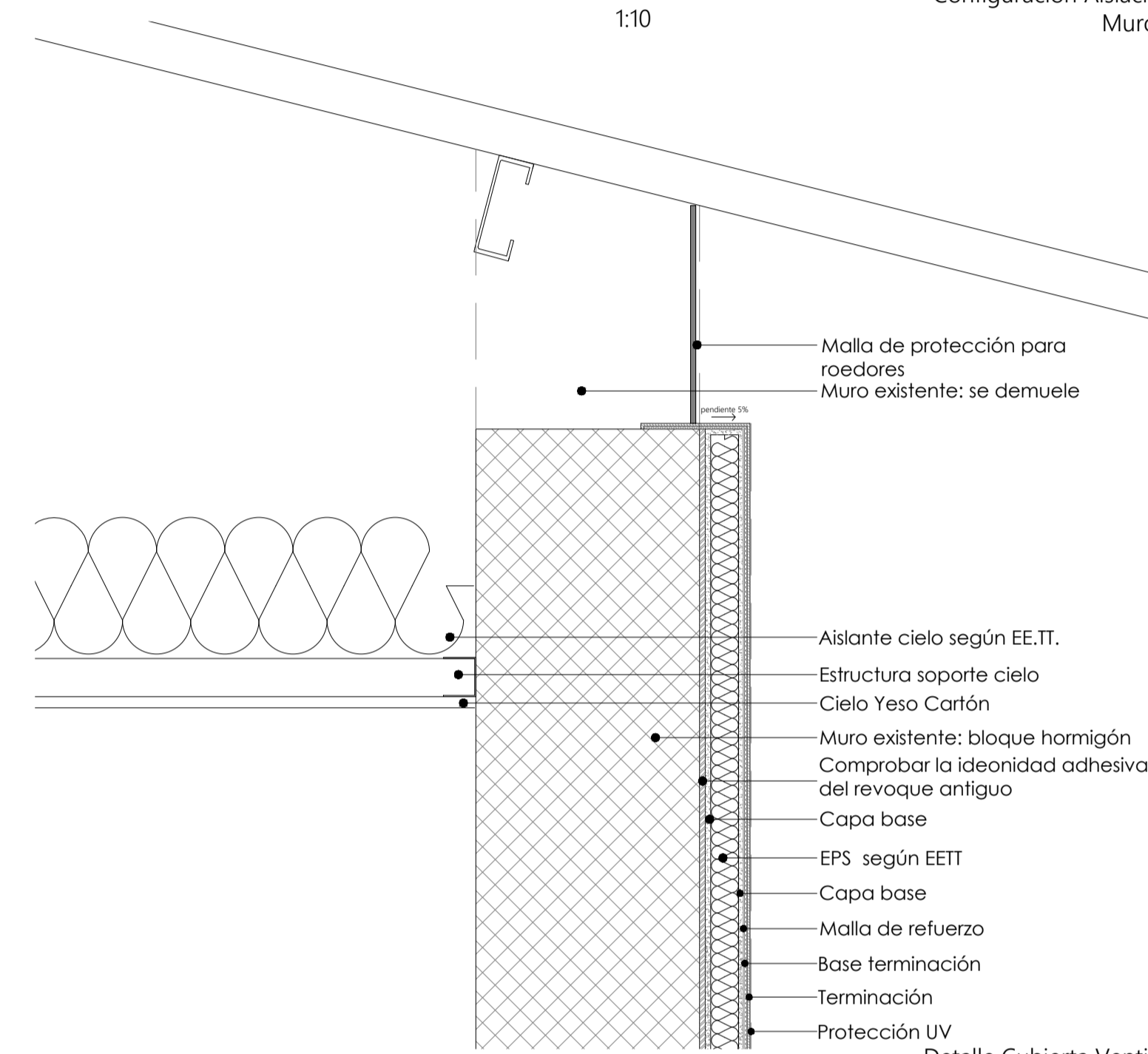
Conjunto de intervención en techo y alero
1:50



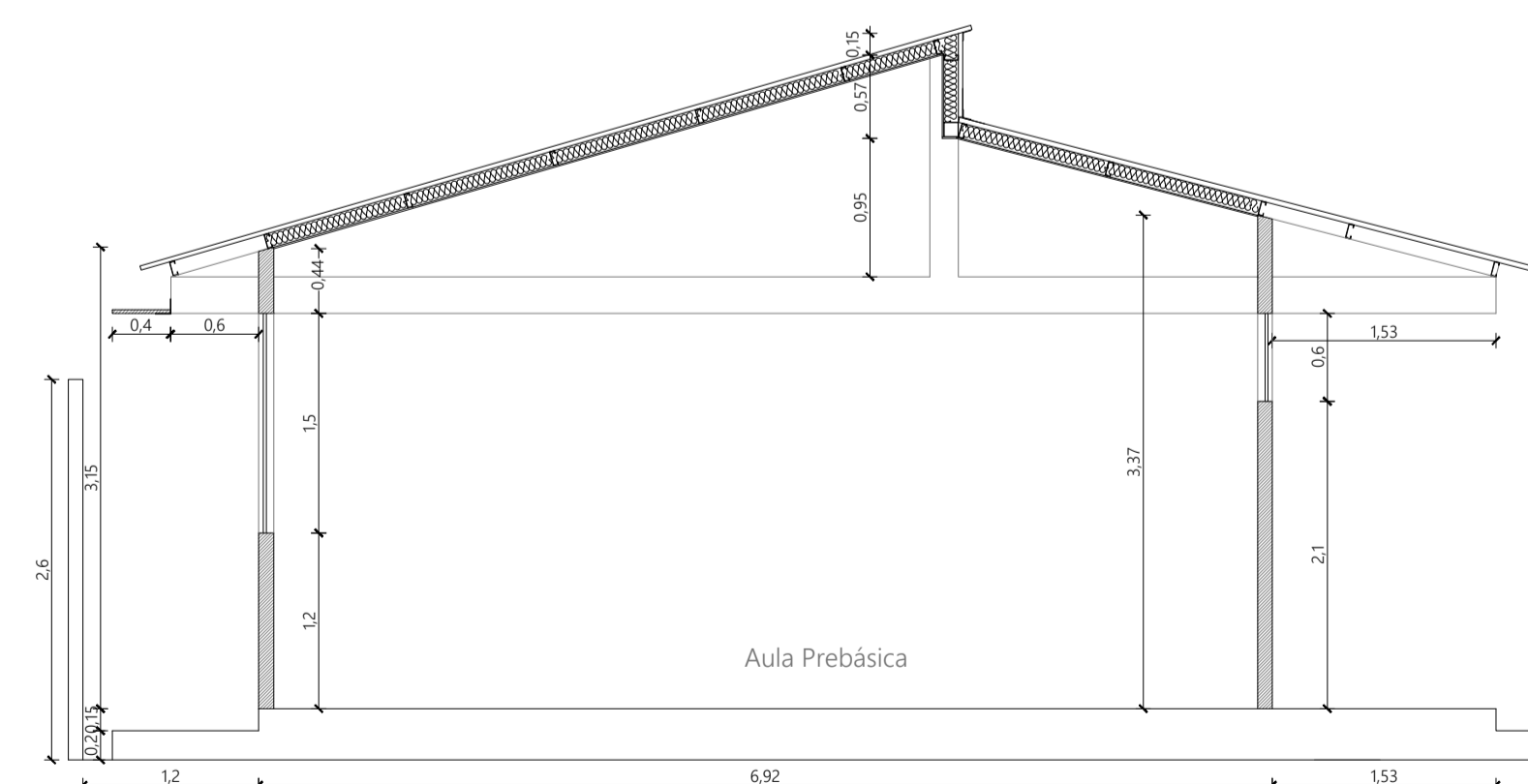
Detalle Estructura Cubierta Aislada
1:20



Detalle Impermeabilización
Alfeizar
1:10



Detalle Cubierta Ventilada
1:5



Detalle Cubierta Aislada
1:50

Escantillones
Medidas de Eficiencia
Energética

Intervención
I. E. Juan XXIII

Programa de Colegios
Sustentables

Departamento de
Córdoba

Municipio de Montería

Propietario:

Ministerio de Educación
Nacional

Municipio de Montería

Arquitecto:

EBP Chile

Dibujo
Daniela Falck

Fecha
20.12.2018

Contenido:

Detalles 1:5/1:10

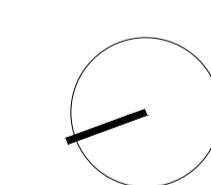
Corte 1:50

Axonometría 1:50

Escala:

Indicadas en lámina

Lámina
3/6



EBP

Schweizerische Eidgenossenschaft
Confédération suisse
Confederazione Svizzera
Confederaziun svizra

Swiss Confederation

Federal Department of Economic Affairs FDEA
State Secretariat for Economic Affairs SECO